

DETAILS

Creative Detailing by Leading Architects

images
Publishing

Edited by Andrew Hall



Japanese-inspired renovation and addition

Torotei – Lantern House, Mornington, Victoria, Australia
Stride Group

The brief for this addition to an existing weatherboard house was to create an additional wing comprising a master bedroom with ensuite and walk-in-robe, two additional bedrooms and a carport with storage. The traditional Japanese lantern (Torotei) was the inspiration for a seamless transition achieved between old and new. Through the use of large expanses of full-height glass, feature shoji screens and strategically placed lighting, a floating lantern effect was achieved.

The use of 900- by 1800-millimetre tatami matting throughout the addition reflected traditional styling and also set the parameters for the layout. The glass wall detail comprises fixed frameless laminated glass extending from the ceiling to approximately 700 millimetres from the finished floor level. Vertical frameless glass louvre windows, approximately 250 millimetres high, run below the entire length of these windows, providing cross ventilation. A 450-millimetre-high solid upstand completes the wall detail section, and full-height feature timber shoji screens with rice paper provide privacy. A timber track, recessed at floor and ceiling levels, enables multiple shoji screens to be slid along the glass walls. To complete the lantern effect, internal and external feature lighting is activated at night.

Much of the initial design for the ensuite was derived from the concept of a traditional Japanese bathing house. Careful construction methods allowed for a decked timber floor finish that drains through to the floor wastes below, creating a wet room. The focal point in this room is the shower wall, where traditionally bathers would wash themselves prior to relaxing in the bathing house. The shower wall contains four adjustable outlets, creating scope for a shared experience, with customary koshikake bathing stools and cedar washtub. The remainder of the space retains an overall Japanese styling through the use of shoji screens with feature reeds, although contemporary elements were introduced for comfort and ease of use.



2



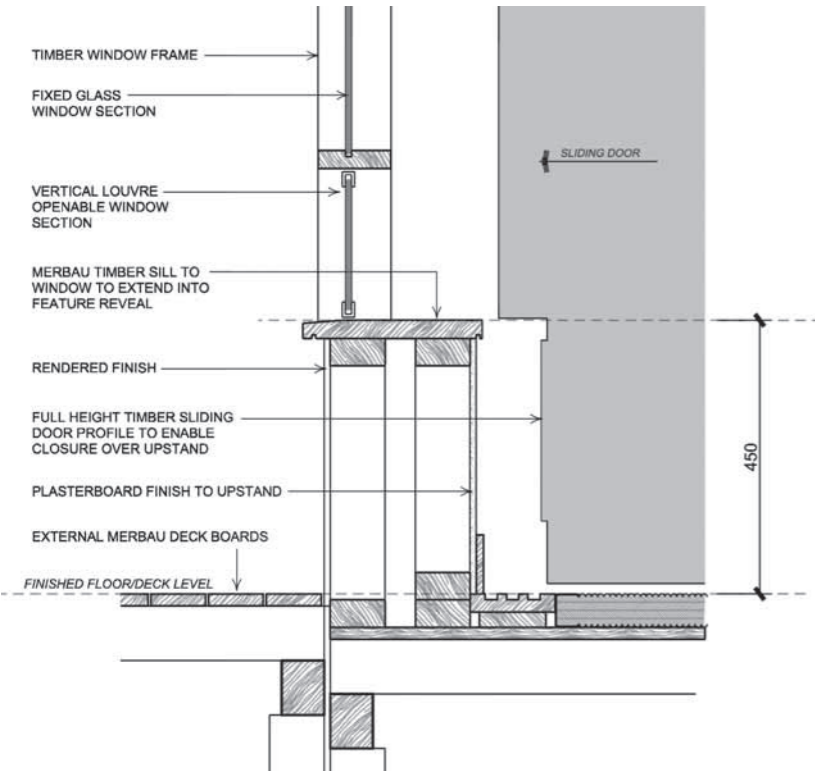
3



4

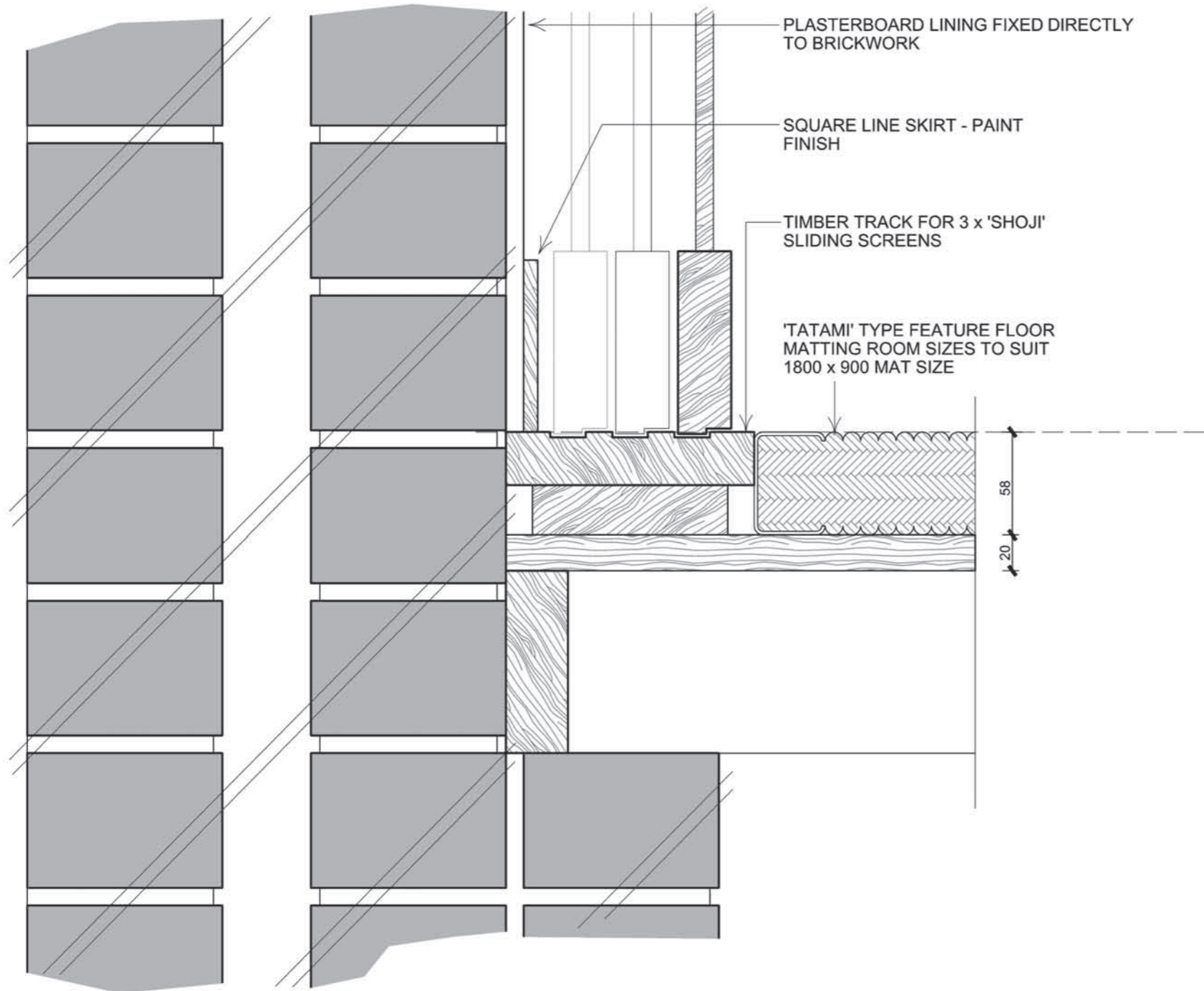


5

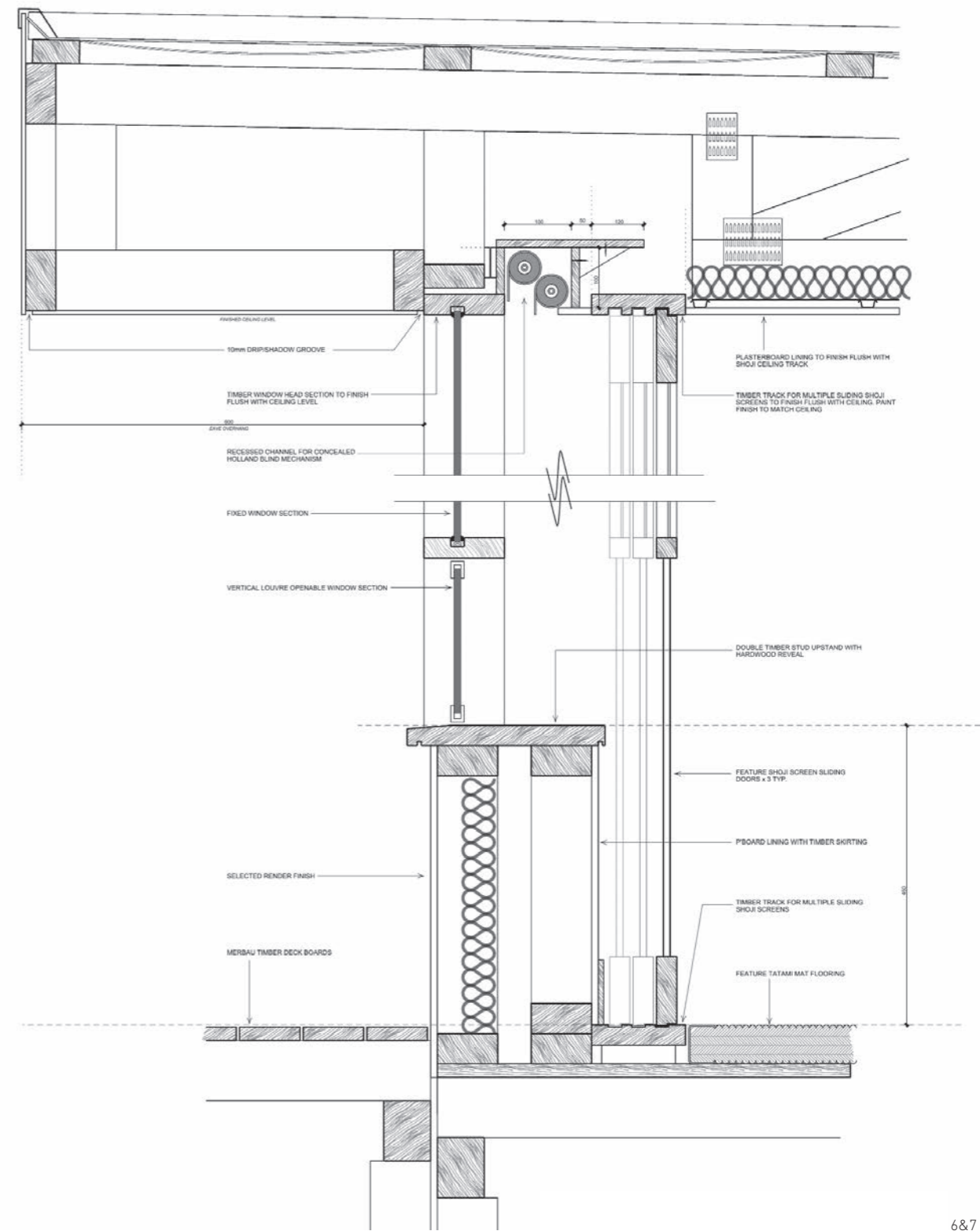


1

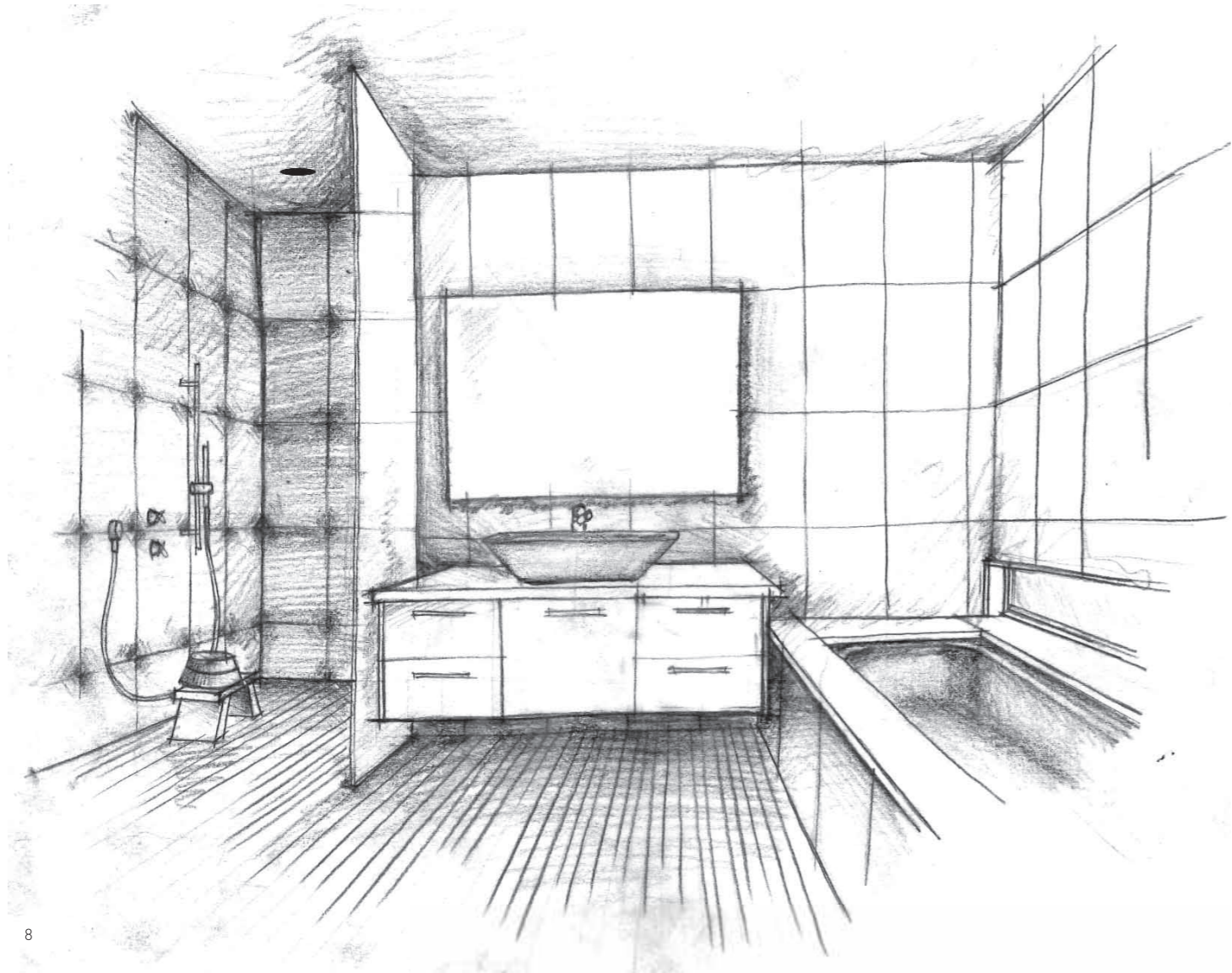
- 1 Section through addition façade
- 2 Decking
- 3&5 Sliding door details
- 4 Tatami mat and timber sill detail



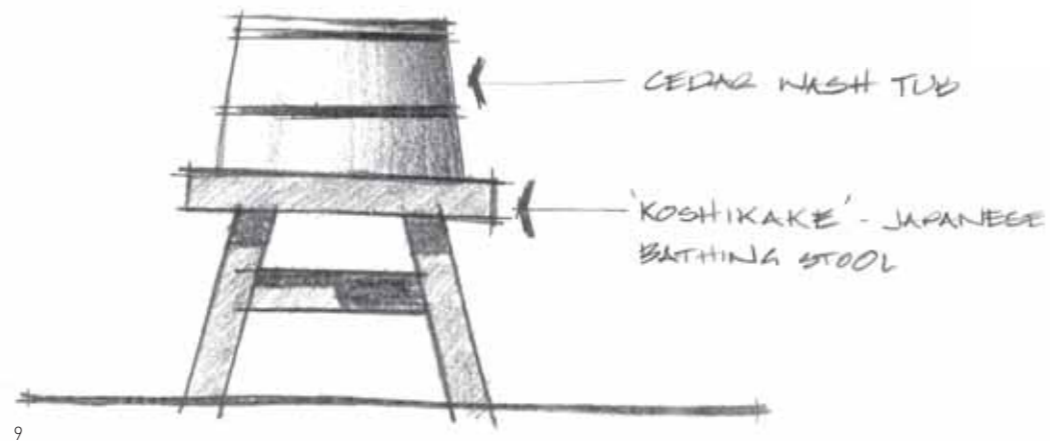
6



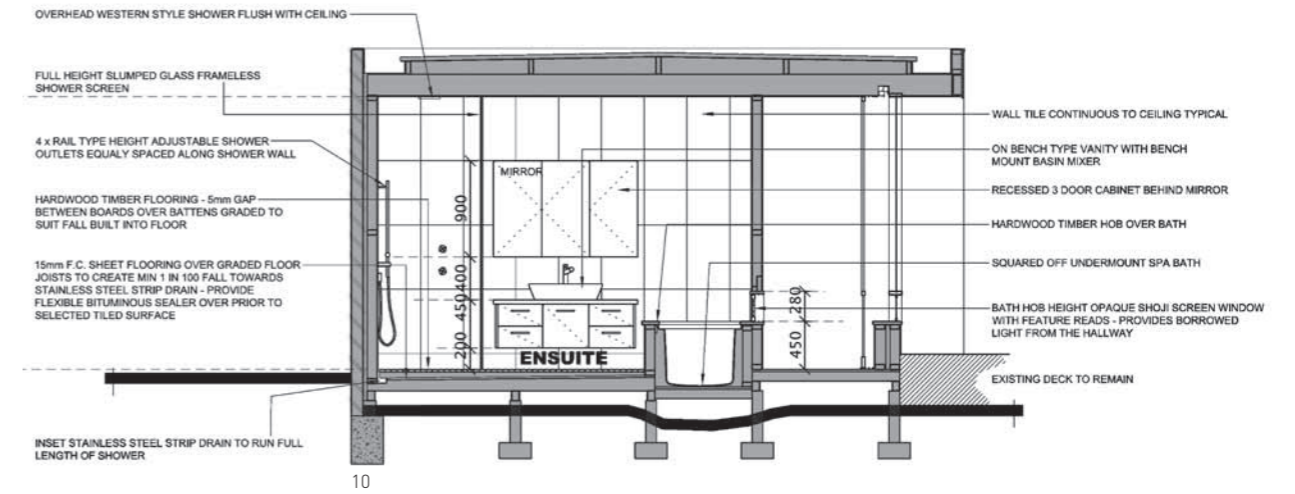
7



8

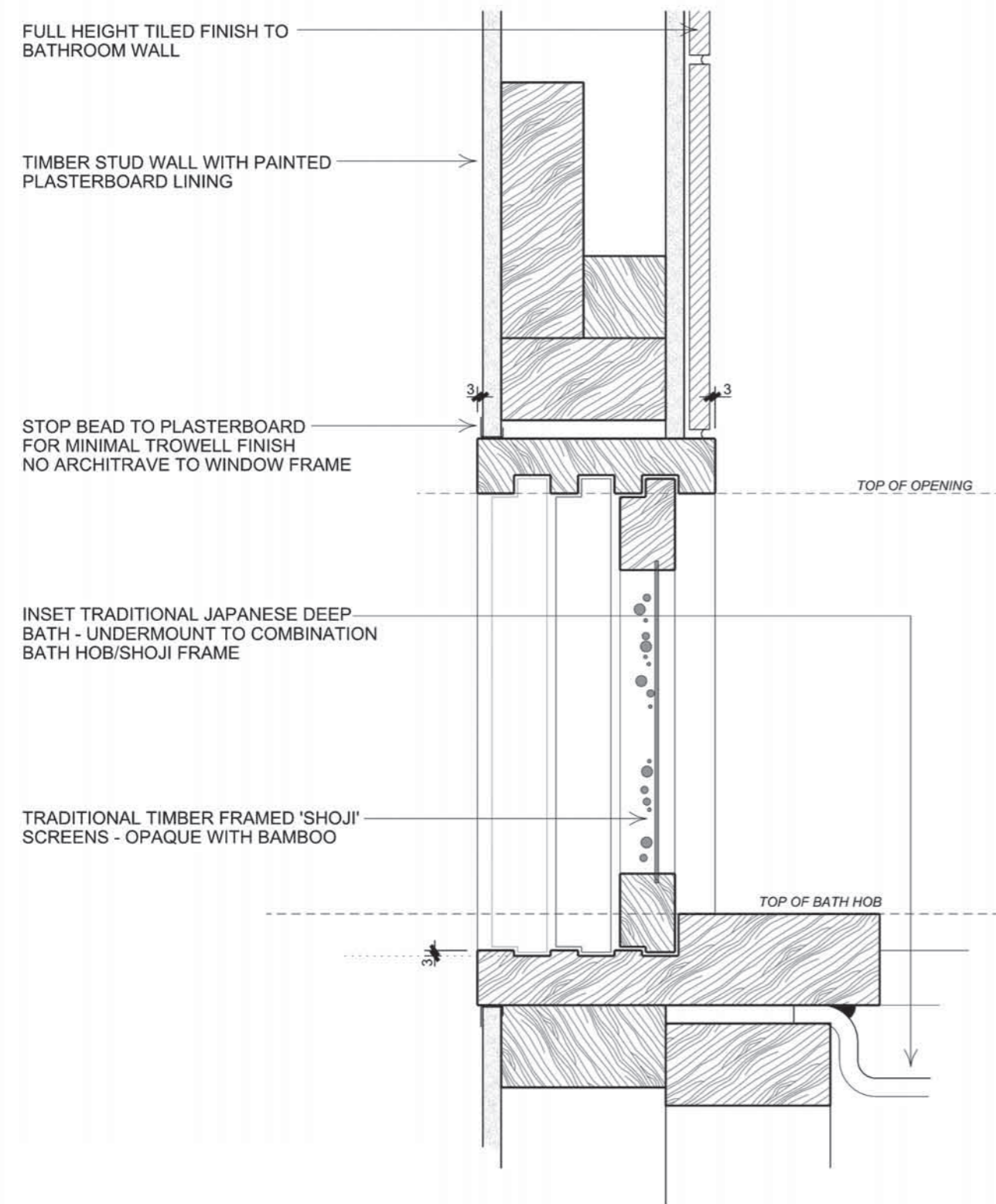


9

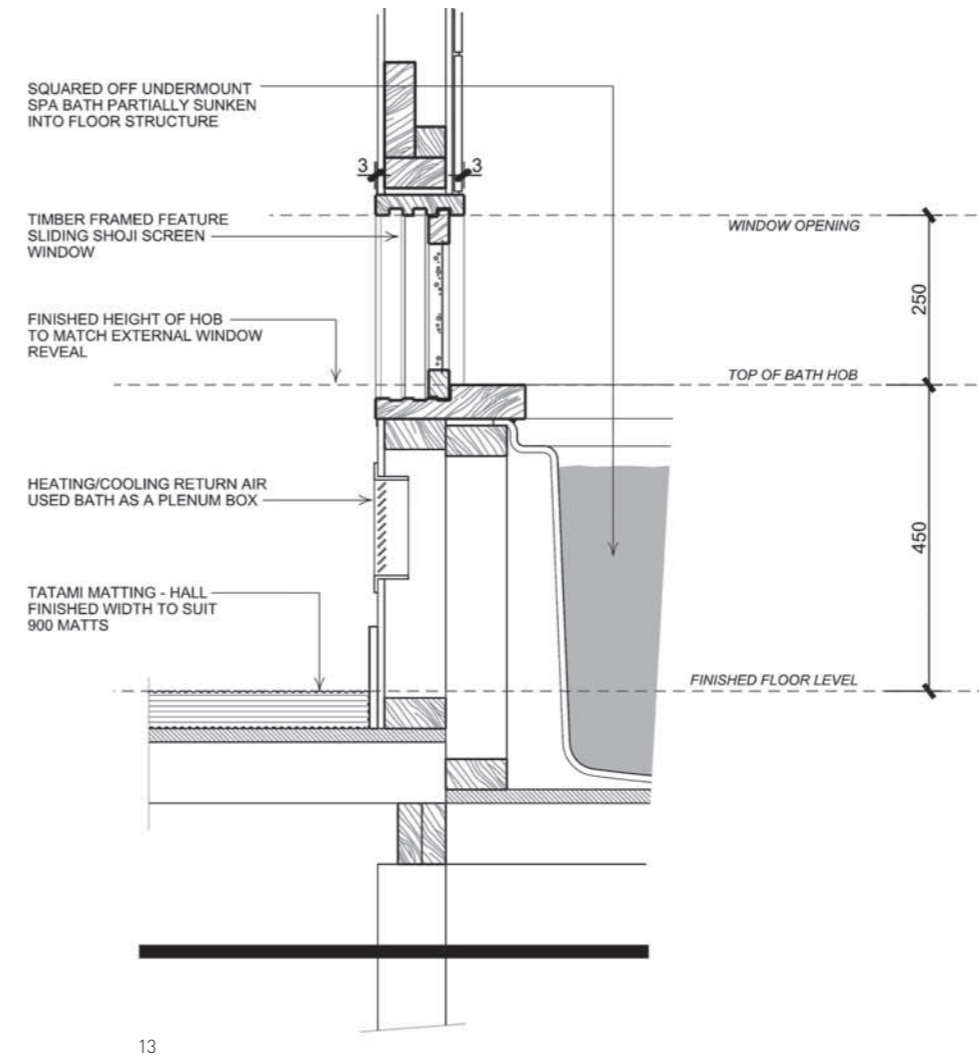


11

- 8&9 Concept sketches
- 10 Section through ensuite
- 11 Ensuite



12



267

- 12&13 Sections through ensuite wall and bathtub
- 14 Hallway view showing ensuite sliding panels
- 15 Sliding panel and bathtub detail